

The Connector

Expect More. Do More.

Q1 2019 Newsletter



BUSINESS SPOTLIGHT

Tootsie's Ice Cream & More

Where can you get a slushie when the temperature is a frigid -10 or a sweltering 100 degrees? Tootsie's Ice Cream & More will cool you off with a variety of ice cream treats or warm you up with delicious food ranging from their famous broasted chicken to burgers, seafood, and more. Year around you'll find the very young and the young at heart at this La Porte City eatery, donned with an authentic Volkswagon Beetle on the roof.

Tootsie's Ice Cream & More owners, Teresa and Corey Siebert, employ 15 people in the winter, and 22 folks in the summer. Since 2013, this walk-up style restaurant and drive thru has delighted customers with great food and vintage look and feel. One of the keys to their success is putting customers first. Teresa and Corey rely on telephone service from LPC Connect to make them efficient and productive.



Pictured is: Teresa Siebert, Owner

Tootsie's had a dilemma with managing both incoming calls from customers and credit card payments simultaneously. "Telephone service is a huge way that we communicate with our customers. We even added a second telephone line to better serve our customers. Now we can talk on the phone and process credit card payments allowing us to help multiple customers at a time," said Siebert.

The Sieberts share the value of responsive service with the LPC Connect team. "They are friendly and quick at trying to resolve any problems in a timely manner. They know you by name and have a welcoming atmosphere when you enter the office. They put a smile on your face when you walk in the door," noted Teresa.

Visit Tootsie's Ice Cream & More in La Porte City or in Vinton for a new twist on a classic malt shop and burger joint. We appreciate your business and look forward to serving you for years to come!



Barb, Customer Service Representative

“ They are friendly and quick at trying to resolve any problems in a timely manner. They know you by name and have a welcoming atmosphere when you enter the office. They put a smile on your face when you walk in the door.

-Teresa

”

Photo
courtesy of
DroneWork



Our Fusion Network Provides the Fastest Internet in the Area

Who wants to wait for files to download or videos to buffer? Not your busy family! LPC Connect's 100% fiber-optic Fusion Network delivers speeds other area providers can't match — up to 1 Gig — so your home's internet will be fast enough for simultaneous use by multiple people, devices, and applications:

- Smartphones
- Tablets
- Snapchat
- FaceTime
- Streaming in 4k

Upgrade your Fusion Internet service to the Gold or Platinum plan and get a \$50.00 credit on your next bill.*

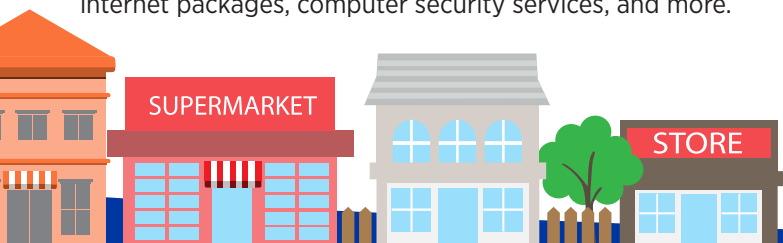
Call 319-342-3369 to get a big increase in internet speed for a small monthly price!

Don't Buy From strangers BUY LOCAL

With national communications providers, you may be forced to try and get help from a call center across the country (or around the globe). Who needs the aggravation?

Choose LPC Connect instead. Our employees are local, so you'll be treated like a neighbor whenever you call or stop by, and you'll get straightforward pricing without any gimmicks or hidden costs. Plus, we actively support the communities we serve through monetary and in-kind donations as well as volunteer hours.

Put your money where your heart is — here at home. Call 319-342-3369 for details on FusionTV service, faster Fusion internet packages, computer security services, and more.



Pictured is Shirley Bagenstos who generously donated 50 scarves that she handmade to LPC Connect's Mitten Tree. Each year Shirley's handiwork and care for her community warms many hearts, heads, and hands.

Thank you to everyone who donated to our Mitten Tree and Food Pantry drive over the holidays. Special appreciation goes to Gary's Thriftway Foods for your partnership by matching donations.

Go Paperless to Save Time and Money

We offer paperless billing and encourage you to use this service if you aren't already. By switching from mailed paper bills to paperless billing, you gain these benefits:

- ✓ Greater convenience
- ✓ Increased security and privacy
- ✓ Improved record keeping
- ✓ Savings of time and money
- ✓ Reduced paper use to help the environment



With paperless billing, you'll receive monthly bill notifications from LPC Connect via email. You can easily view your bill online. **Call Barb or Heidi at 319-342-3369 to sign up for paperless billing today.**

We've Got You Covered With LPC WiFi Connect

You love having a WiFi network, but not the hassles of equipment upgrades and troubleshooting. That's why we offer LPC WiFi Connect. Our team handles it all for you, so you can simply enjoy strong signals and fast Internet on all your devices.

Simplify your life with LPC WiFi Connect. Installation is a one-time optimization fee of \$100.00 and the low monthly rate is \$9.95. Call 319-342-3369 or visit www.lpcconnect.net to get started.

*LPC WiFi Connect works in conjunction with your LPC Connect Internet service. Residential customers only. 12-month agreement required. Some restrictions apply, contact us for details.



Skyrocketing Sports Rights

People love to watch sports, and sports executives know it – so the programming comes at a premium. The price networks pay to air sports has caused your basic TV bill to double over the past decade. The NFL alone makes a little over \$7 billion per year for broadcast and cable rights to air their games. Combine that with the MLB, NBA, NHL, MLS, college and other sports and you can quickly see the impact.

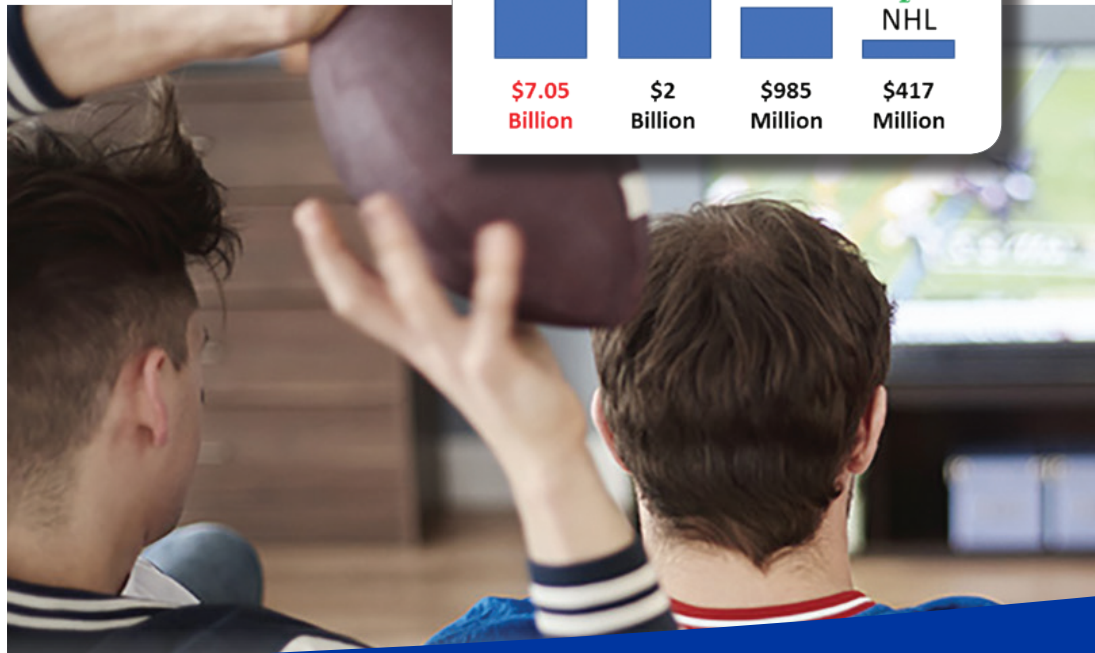
Escalating salaries of star players and coaches place large financial demands on teams and leagues who drive up programming costs to cover expenses.

All of this means escalating costs for you.

What's more, many teams, leagues and conferences have their own networks and charge TV providers separate, additional fees. To maximize their profits, these sports networks require TV providers to include them on basic lineups, forcing you to pay for sports programming whether you watch sport or not - which just isn't fair.

We're on Your Side

We believe that every TV viewer should have a choice: fans should have access to the games they want. We are fighting for this right and working to keep your FusionTV prices fair. Thank you for your continued support.



TECH HOME

More Devices More Tech Home!

2 Months
FREE!
for new Tech Home Support subscriptions.*

The more devices you have, the more protection you need. Tech Home makes it easy to cover all of your computers, tablets and smartphones! Upgrade to Protect Plus to cover up to 4 computers and mobile devices. Upgrading to Support gives you all that protection, plus 24/7/365 Wi-Fi and technical support for all your connected devices in the home.

TECH HOME
Technology Made Easy

Protect
1 PC & 1 Mobile

Protect Plus
4 devices

Support
4 devices

Award-winning internet security	✓	✓	✓
Anti-theft for phone/tablet	✓	✓	✓
Virus, spyware, ransomware protection	✓	✓	✓
Parental controls	✓	✓	✓
File backup	50GB	250GB	250GB
Password manager	✓	✓	✓
Free installation assistance	✗	✗	✓
New device setup/configuration	✗	✗	✓
PC tuneup/optimization	✗	✗	✓
Whole home tech support	✗	✗	✓

*Offer valid through March 31, 2019 for new Tech Home Support subscribers. Call for complete details.

LPC Connect

306 Main St. • P.O. Box 185
La Porte City, Iowa 50651
Monday - Friday
8:00 a.m. - 4:30 p.m.

319-342-3369

email: lpctelco@lpctel.net
www.lpcconnect.net
www.facebook.com/lpctel

Internet Tech Support: 855-558-9863
SecureIT Tech Support: 877-373-3320
After Hours Repair: 319-342-2213